

Transportation Advisory Committee

Meeting date: August 26, 2024

Agenda Item #: 7 (Attachment E)

South Boulder Road and Alameda Avenue Corridor Studies Final Reports

Agenda item type: Discussion

Summary

Overview of the recently completed South Boulder Road and Alameda Avenue corridor studies, the two first pilot projects in the Corridor Planning Program.

Background

In 2022, DRCOG selected Alameda Avenue and South Boulder Road as two pilot projects for the new corridor planning program. Through this program DRCOG leads studies or planning efforts to advance planning on regionally significant projects identified in the 2050 Regional Transportation Plan.

The Alameda Avenue Corridor Study assessed multimodal transportation services and facilities, including the potential for future bus rapid transit (BRT), on Alameda Avenue from Wadsworth Boulevard to Sable Boulevard. This corridor is identified for BRT in the 2030-2039 staging period of the 2050 Regional Transportation Plan. The corridor was previously recommended for BRT through the Regional Transportation District's (RTD) Regional BRT Feasibility Study and the Denver Moves Transit plan. DRCOG worked closely with Lakewood, Denver, Glendale, Aurora, RTD and CDOT on this project.

The South Boulder Road Corridor reviewed multimodal transportation on the corridor from the Broadway and Table Mesa Drive intersection in Boulder to South 120th Street in Lafayette. The corridor is identified for transit planning in the 2040-2050 staging period in the Regional Transportation Plan. The corridor was previously recommended for further analysis of BRT in the 2014 Northwest Area Mobility Study (NAMS). DRCOG worked closely with Boulder County, the City of Boulder, Louisville, Lafayette and RTD on this project.

Both studies kicked off in 2023, followed similar planning processes, and recently wrapped up. Key highlights of the process included:

- A **technical advisory or project management committee** comprised of all the local jurisdictions and partner regional agencies meet monthly to guide the projects.
- A broader **Steering Committee** was convened to gather input and direction from stakeholders, including community leaders, advocates and elected officials.
- The project team developed an **existing condition report** to document past planning efforts, demographics, land use, multimodal infrastructure, safety concerns, and transit operations.
- The stakeholders for each study developed a project **vision and goals** to guide the analysis and recommendations.



- Each project included **community engagement** to gather input from the public on concerns and issues along the corridor, and then to review and refine the draft recommendations.
- The project teams developed final **project recommendations** and **implementation guidance**, including next steps, potential funding, and prioritization.

The full report and final recommendations for each study will be on the [Alameda Corridor Study](#) and [South Boulder Road Study](#) project websites after final accessibility remediation is complete.

Action by others

None

Previous discussion/action

[May 22, 2023](#) – Transportation Advisory Committee

[January 22, 2024](#) – Transportation Advisory Committee

Recommendation

None

Attachment

Staff presentation

For more information

If you need additional information, please contact Nora Kern, Subarea and Project Planning Program Manager, Transportation Planning and Operations, at 303-480-5622 or nkern@drcog.org.



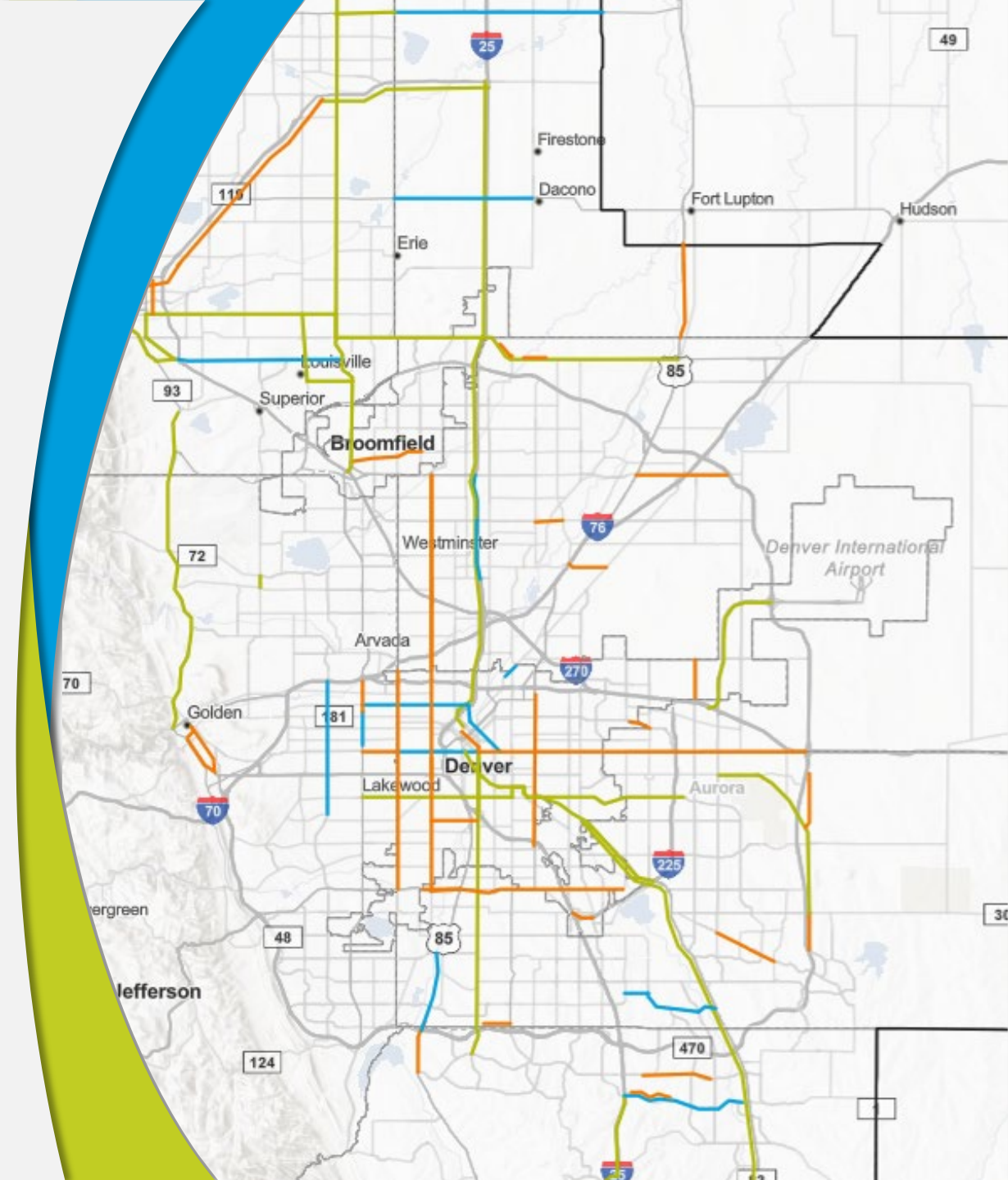


Pilot Corridor Planning Wrap Up

Transportation Advisory Committee, August 26, 2024

Corridor planning pilot

- Advancing Regional Transportation Plan priorities.
- Focuses on corridors identified in RTP.
- Pilot started in 2022.
- Alameda Corridor Study and South Boulder Road study first two projects in pilot program.
- 2024-2027 Corridor Planning Set-Aside.





Pilot studies: Planning process

- Project Management Committee.
- Steering Committee.



Existing conditions analysis.



Goals and vision.



Community and stakeholder engagement.



Recommendations and next steps.

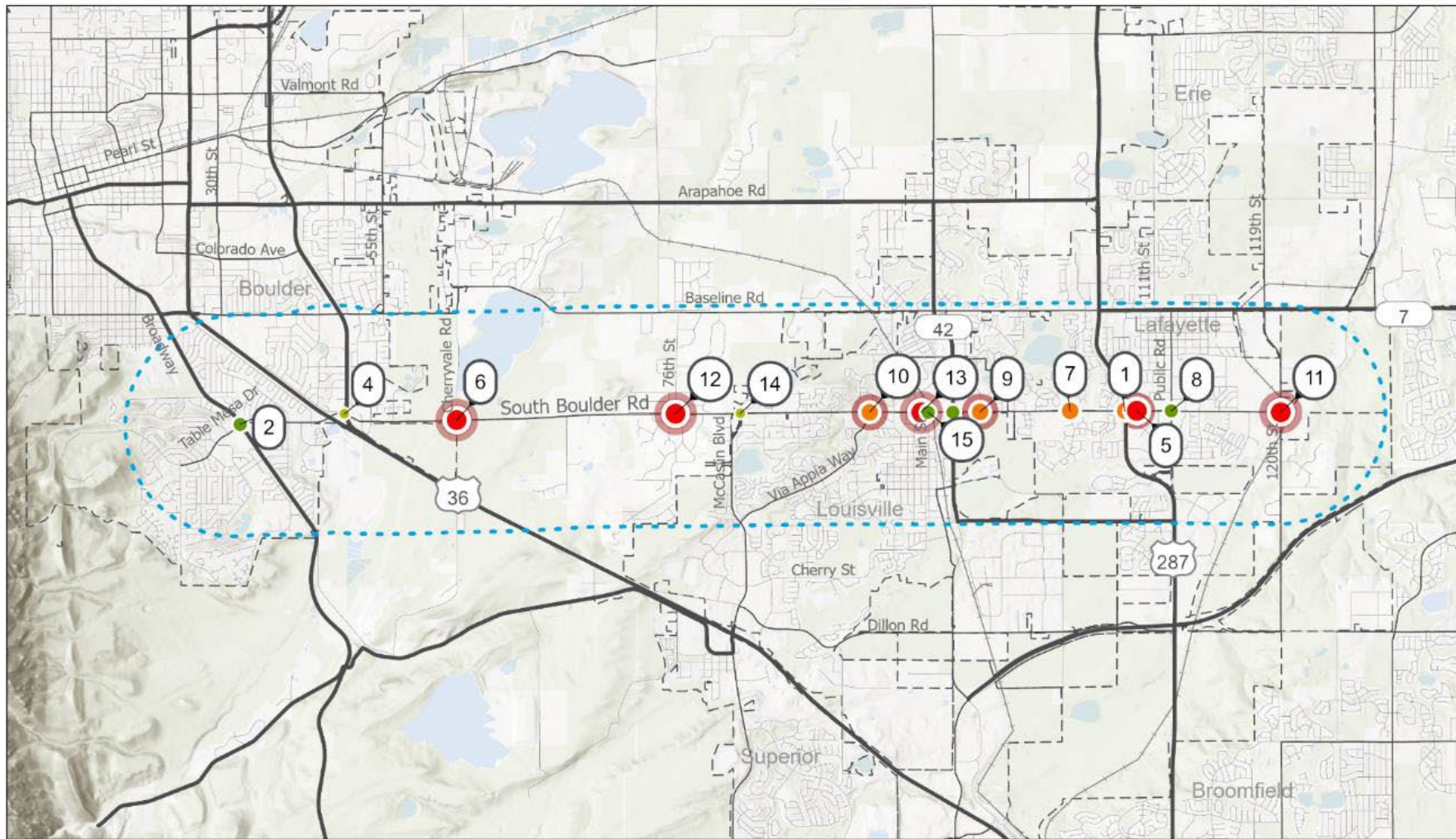


South Boulder Road

South Boulder Road: Existing Conditions

- Past Plans:
 - Identified in 2050 Regional Transportation Plan as transit corridor. Recommended for BRT analysis in Northwest Area Mobility Study (NAMS).
- Travel Patterns:
 - Longer trips on western end, more local trips on eastern end.
- Demographics and land use forecast:
 - Higher equity index scores (more disadvantage) in east.
 - Significant residential and jobs growth, particularly in east.

South Boulder Rd Level of Service of Safety



LOSS Total

- 1
- 2
- 3
- 4

Study Area 1 Mile Buffer

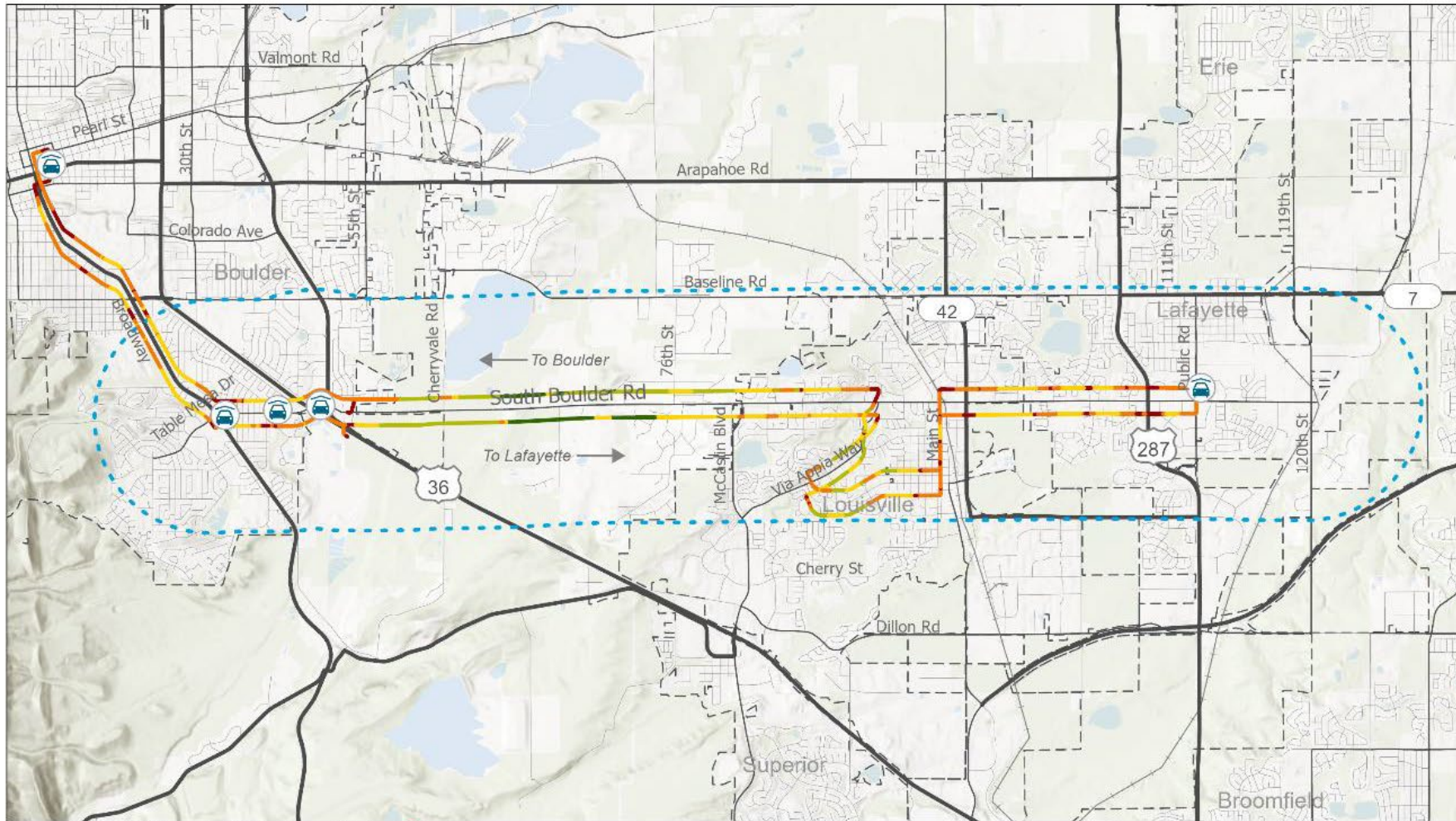
● Indicates LOS Severity 3 or 4

DRCOG makes no claims, representations or warranties, express or implied, concerning the validity (express or implied), the reliability or the accuracy of the data herein, including the implied validity of any uses of such data. DRCOG shall have no liability for the data or lack thereof, or any decisions made or action not taken in reliance upon any of the data.



SOURCE DATA: DRCOG, RTD, CDOT, Boulder County, City of Boulder
 Mapbox Basemap; SR 6428
 Creator: Danielle Furuichi, 8.21.2023
 Location: Fehr & Peers GIS Server

AM Peak RTD DASH Slowest Speeds



Slowest Transit Speeds (10th Percentile) Park and Ride Facilities

- 0 to 5 MPH
- 6 to 10 MPH
- 11 to 20 MPH
- 21 to 35 MPH
- >35 MPH

SBR 1 Mile Buffer



DRCOG makes no claims, representations or warranties, express or implied, concerning the validity (express or implied), the reliability or the accuracy of the data herein, including the implied validity of any uses of such data. DRCOG shall have no liability for the data or lack thereof, or any decisions made or action not taken in reliance upon any of the data.

SOURCE DATA: DRCOG, RTD, CDOT, Swifly
 Mapbox Basemap; SR 6428
 Creator: Mikhail Kammer, 8.11.2023
 Location: Fehr & Peers GIS Server

South Boulder Road Engagement

- Webpage.
- Phase 1:
 - Interactive comment map.
 - Online surveys.
 - Virtual public meeting.
 - 1 Spanish focus group.
 - Two rec center pop ups
- Phase 2:
 - Online survey.
 - Virtual public meeting.
 - 3 pop-ups at parks/rec centers.



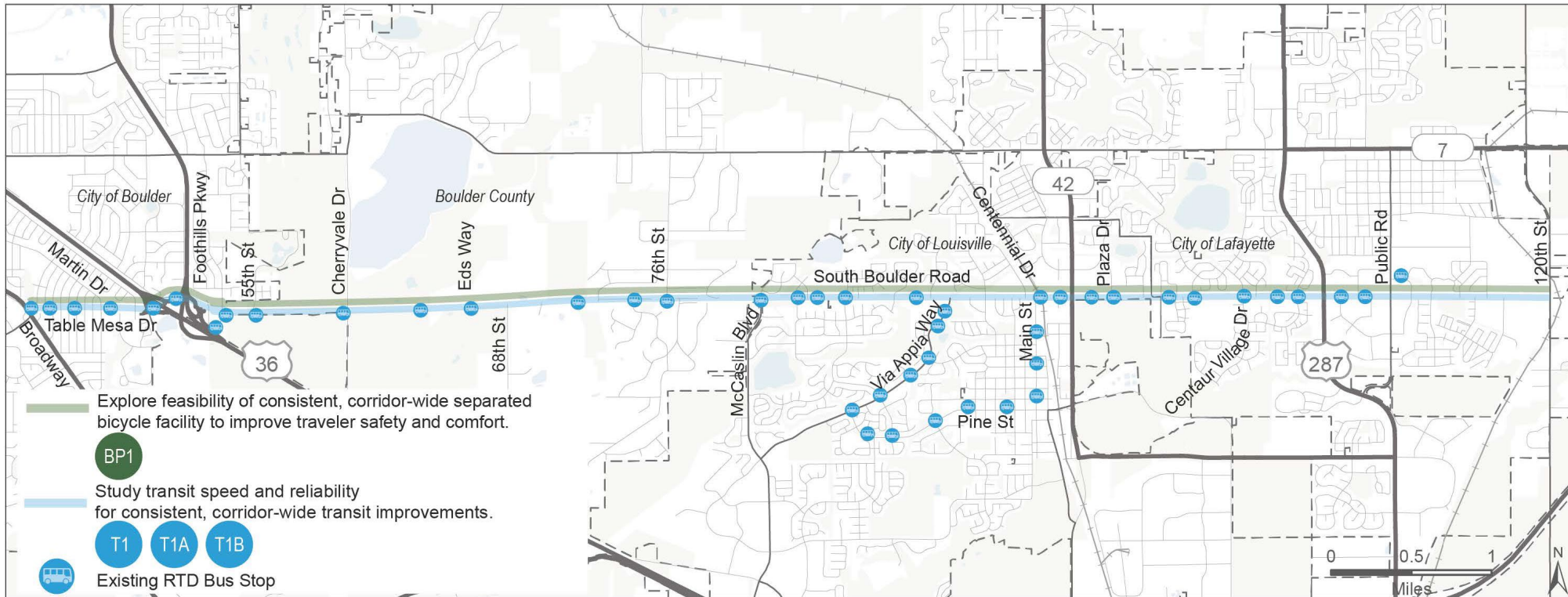
South Boulder Road Vision

Create a forward-looking transportation framework that prioritizes safety and mobility for all people traveling on South Boulder Road and Table Mesa Drive between Boulder and Lafayette.

- Address current and future travel demands.
- Improve multimodal connectivity to, from, through, and across the corridor.
- Improve safety for pedestrians, bicyclists, and drivers.
- Optimize transit performance (travel time, reliability, frequency, bus stops).
- Serve the contexts of adjacent communities.

South Boulder Road Recommendations

The two key corridor-wide recommendations envisioned for the entire length of South Boulder Road include a connected and improved bikeway and transit speed and reliability improvements (**Figure 15**). In addition, this study recommends efforts to minimize the impacts of future construction on access to surrounding neighborhoods and the safety of all roadway users.



Note: Further study will determine the side of roadway for the separated bike facility. A timeline for implementation has not been established yet but will range from short term to long-term depending on recommendation.

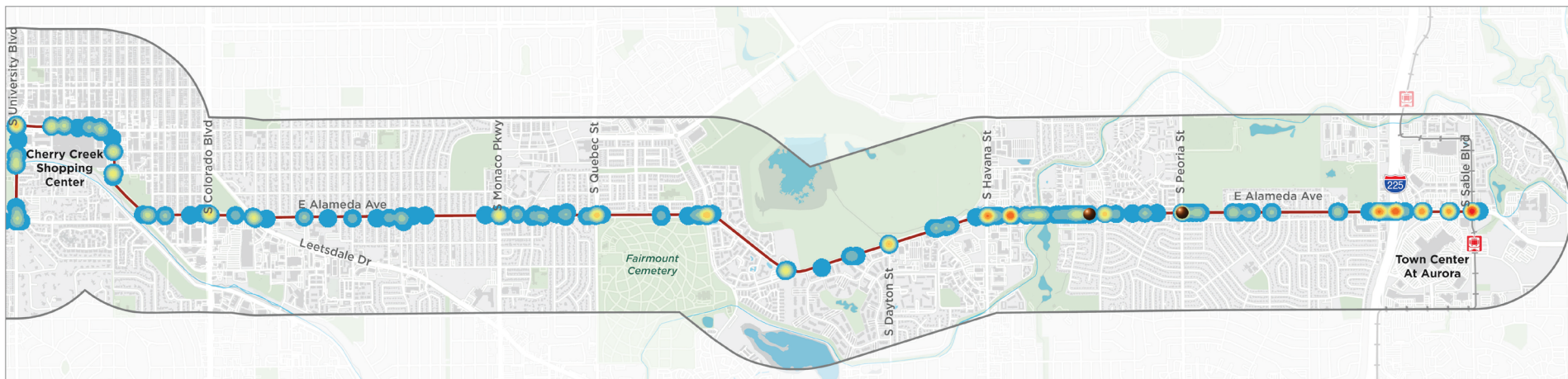
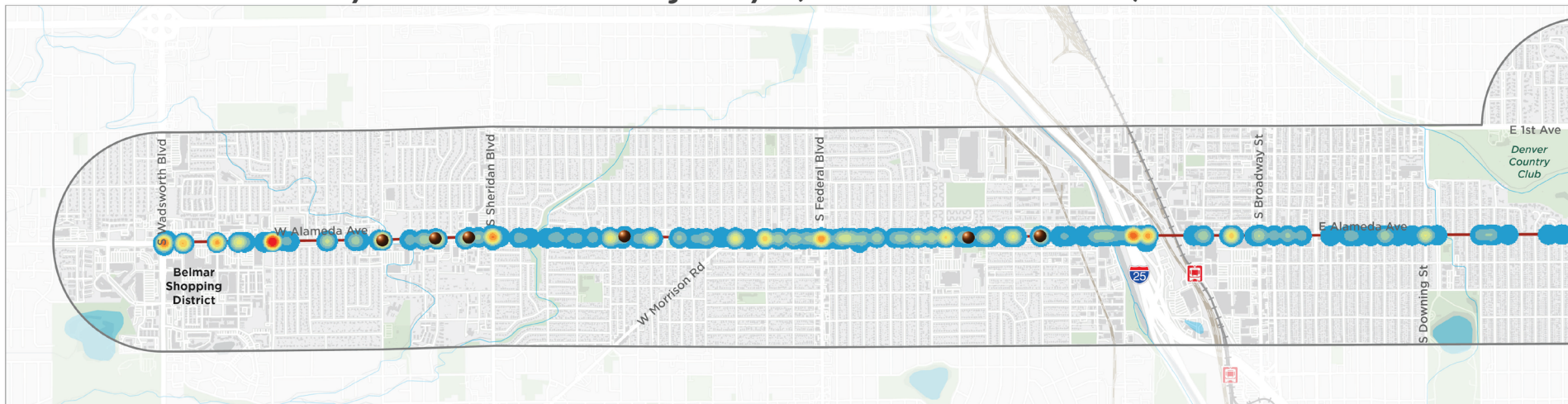


Alameda Corridor Study

Alameda Existing Conditions

- Plan & ongoing project review:
 - Identified in 2050 Regional Transportation Plan for BRT (2030-2039).
 - Identified in Denver Moves Transit for BRT.
 - Ongoing projects (Denver Moves Cherry Creek, DOTI Lane Road Diet).
- Demographics and land use forecast:
 - Significant equity populations, particularly West Denver and Aurora.
- Travel Patterns:
 - Few regional trips along corridor.

Crash Density- Fatal & Injury (2017 - 2021)

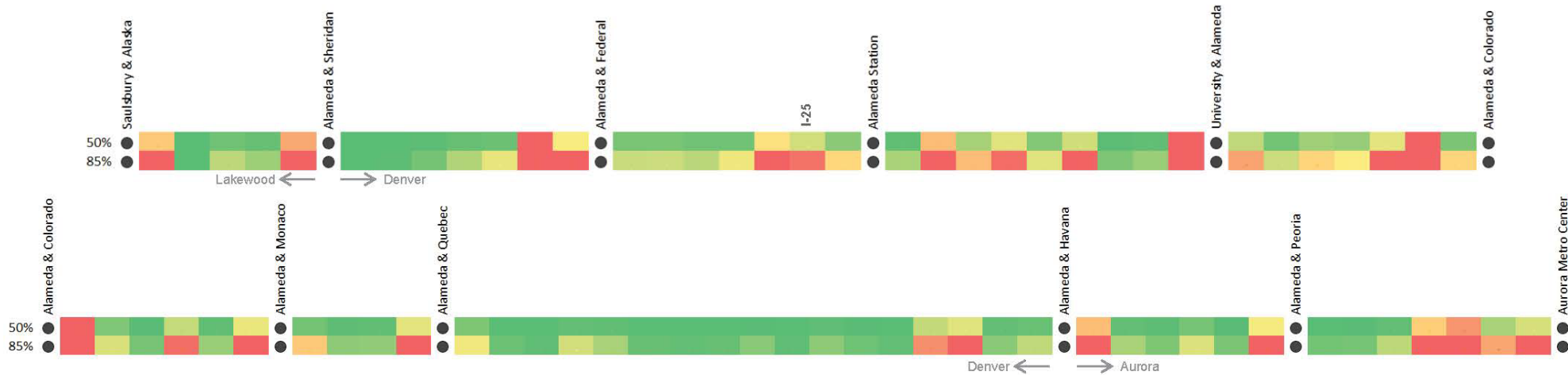


DRCOG makes no claims, representations or warranties, express or implied, concerning the validity (express or implied), the reliability or the accuracy of the data herein, including the implied validity of any uses of such data. DRCOG shall have no liability for the data or lack thereof, or any decisions made or action not taken in reliance upon any of the data.

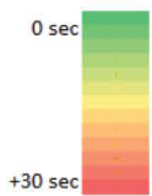


Source: DiExSys Vision Zero Suite (VZS), 2017 - 2021

Eastbound transit delay between stops



Legend



● major bus stop

50% - 50th percentile delay between stops

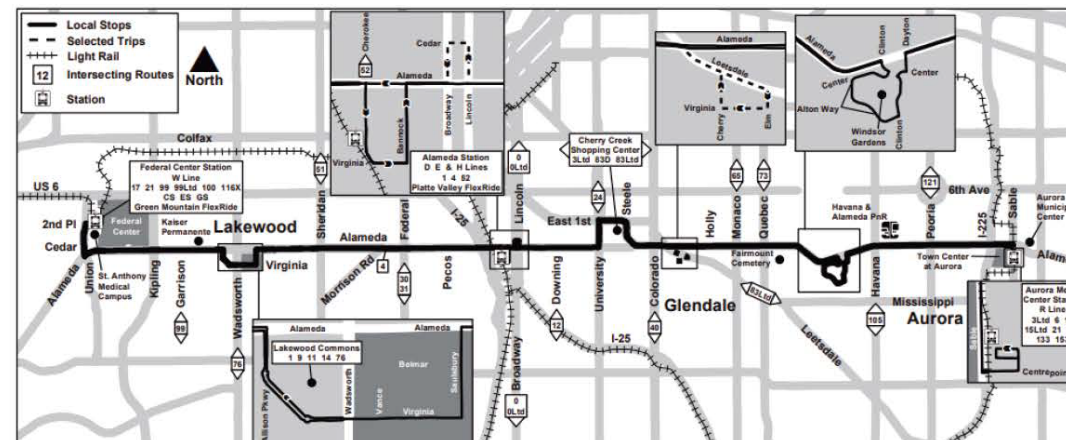
85% - 85th percentile delay between stops

Key Takeaways

- + Delay between stops increases as the bus approaches major intersections.
- + Eastbound buses experience additional delay in the narrower stretch of roadway between Alameda Station and University & Alameda.
- + While limited delay is experienced by buses between Alameda & Quebec and Alameda & Havana, the diversion into Windsor Gardens adds significant travel time to the route.

Route 3 Alameda Avenue

Effective: 3 September 2023
Map Revised: 3 September 2023



Alameda Engagement

- Phase 1:
 - 5 focus groups.
 - Webmap and online survey.
- Phase 2:
 - Online survey.
 - Promoting survey at bus stops, libraries.
 - Neighborhood association meetings.



Alameda: Vision and Goals

The Alameda corridor unites its communities while preserving their character, emphasizes transit as a primary mode, and above all supports safe and comfortable mobility for everyone.



Connectivity



Safety



Improved Transit



Accessibility



Mobility

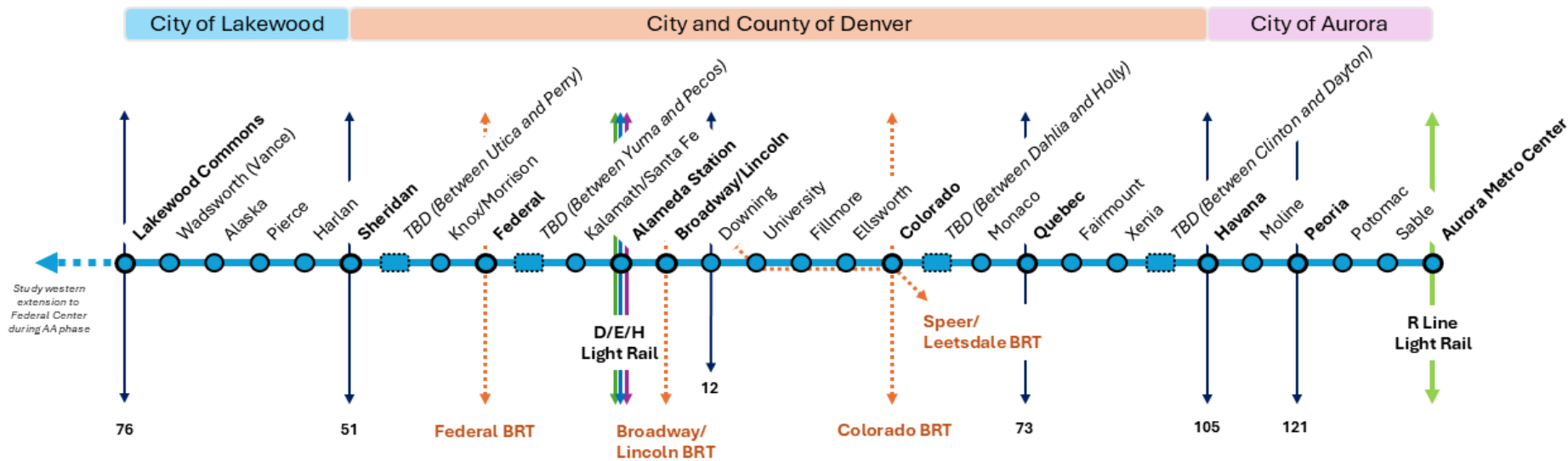


Vibrancy

Alameda: Recommendations

DRAFT

Preliminary Alameda BRT Station Map

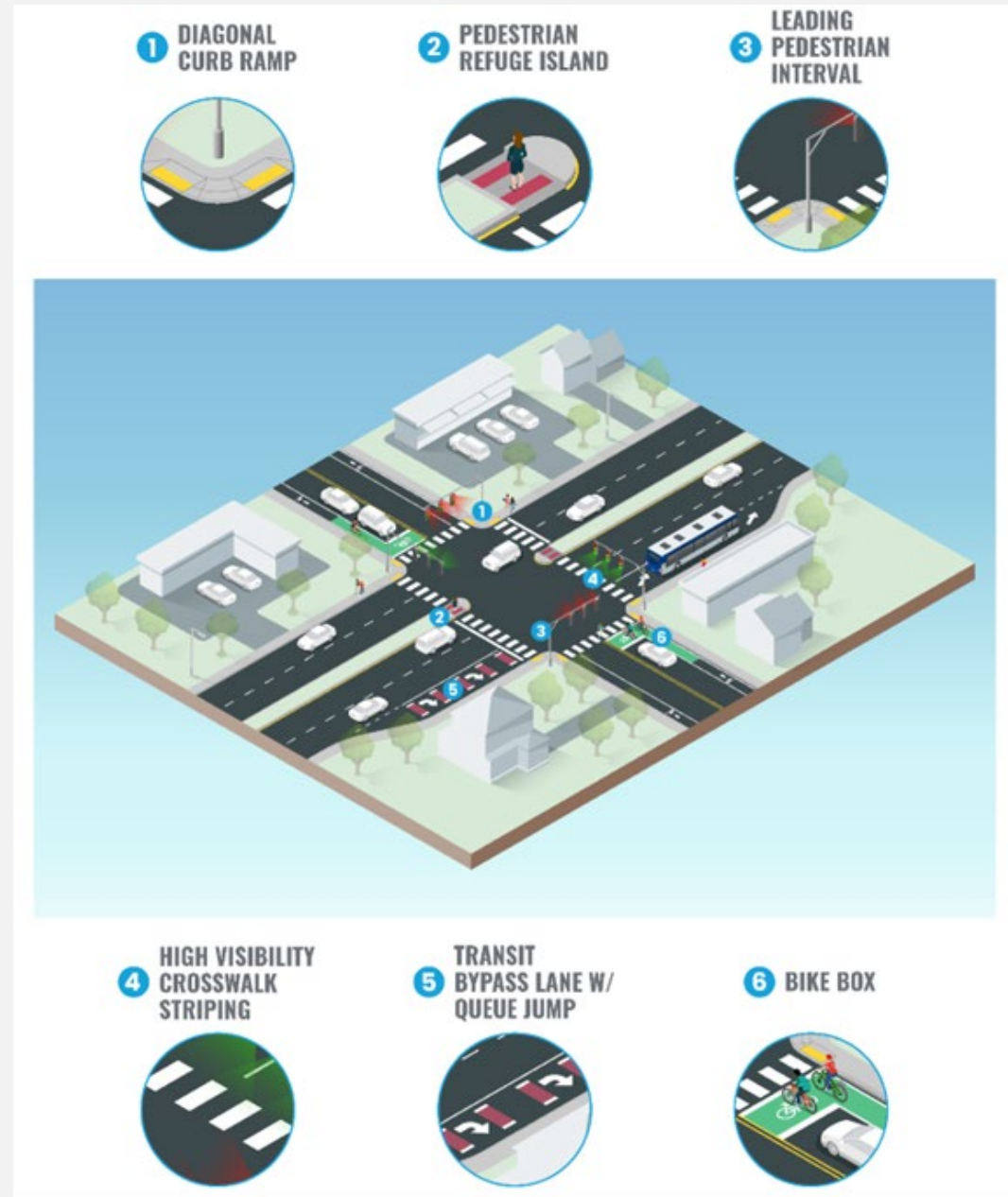


Legend

- Alameda Ave BRT
- Major Transfer Station
- BRT Station
- BRT Station (TBD)
- Connecting LRT
- Connecting BRT
- Connecting High-Frequency Bus Line

Alameda: Recommended improvements

- Major intersections.
- Minor intersection.
- Mid-block or unsignalized crossings.
- Short/mid-term transit.
- Bike network connections.
- Corridor speed and safety.
- Sidewalks and public realm.



Corridor planning program: Look ahead

- 2024-2025 Set Aside Projects:
 - East Colfax BRT Extension Alternatives Analysis.
 - Sheridan Corridor Safety Study.
- 2026-2027 Set Aside:
 - Call for projects summer/fall 2025.

Thank you! Questions?

Nora Kern

Subarea and project
planning program manager

nkern@drcog.org

If you have difficulty using this document's content, please email nkern@drcog.org. Please expect a response within 72 hours (three business days).